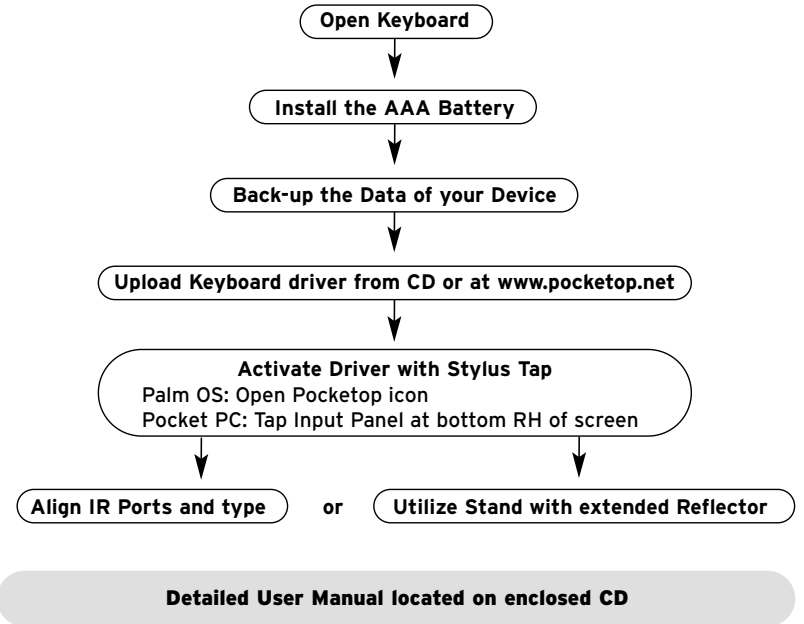




www.Pocketop.net

Quick Set-up

Please read carefully before using the Pocketop Keyboard



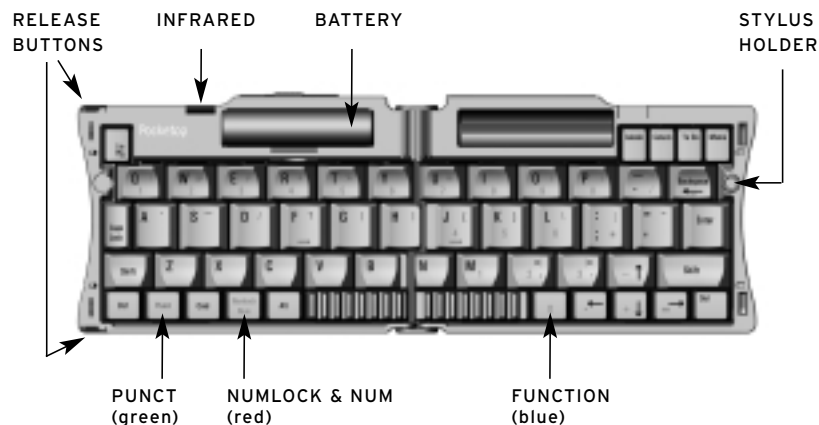
Opening the Keyboard

Hold the keyboard and press the two release buttons located on the two corners (see Keyboard Layout). The keyboard will open like a book.

Installing the Battery

- 1 Open the battery compartment located on top of the keyboard. Insert the AAA battery as per the diagram in the upper right of the battery compartment.
- 2 Close the battery compartment ensuring the black pullout tape is tucked into the battery compartment.

Keyboard Layout



2

Palm OS: Driver Installation

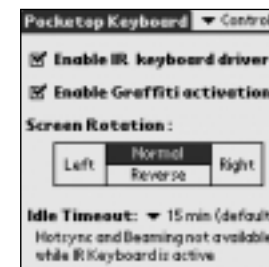
Important Tip: Back-up all data prior to loading driver software.

- 1 Load the CD (included) into your computer. The Install Wizard will guide you in automatically loading the Palm OS driver onto your handheld. ¹

Palm OS: Enabling the Keyboard

- 1 Call up the Applications menu and tap the "Pockettop" Software Icon.
- 2 The "Control" screen will appear. See Fig. 1.
- 3 Click the Enable Keyboard Driver checkbox. (To disable, uncheck the box).
- 4 Click the Graffiti activation checkbox. This allows the user to enable or disable the keyboard driver with a simple Stylus drag through the Graffiti area from left-to-right or right-to-left.

Fig. 1



Important Tip: To successfully HotSync your Palm OS device in the future, you must disable the keyboard driver.

- ¹ IF THE INSTALL WIZARD FAILS TO START AFTER INSERTING THE CD, PLEASE DO THE FOLLOWING:
- a Access the Start Menu of your PC and choose Run. Type d:
 - b Find the setup.exe file on the CD and choose Open from the File pull-down menu.

3

All Pocket PC devices: Driver Installation

- 1 Load the CD (included) into your computer. The Install Wizard will automatically load the Pocket PC driver onto your handheld.
- 2 If prompted to replace any existing files, select "Yes to all."
- 3 Perform a soft re-set.

Pocket PC 2002: Enabling the Keyboard

- 1 Tap on any application other than Today.
- 2 Tap the arrow at the bottom right-hand corner of the screen display (see Fig. 2). A pop-up menu will appear.
- 3 Tap on "Pockettop Keyboard." Icons will appear at the bottom of the screen for rotation, backlight brightness, text macro and sound off/on.

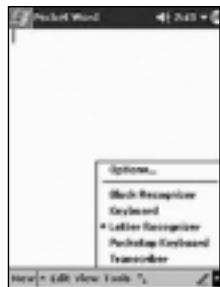


Fig. 2

← (Tap here)

- 4 The screen can be rotated as per Fig. 3.

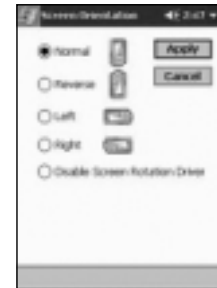


Fig. 3

Pocket PC 2000: Enabling the Keyboard

- 1 Tap "Start" and select "Programs."
- 2 Tap the "Pockettop" icon.
- 3 The "Main Set-up" screen will appear. See Fig. 4.
- 4 Click the Enable Keyboard Driver checkbox.

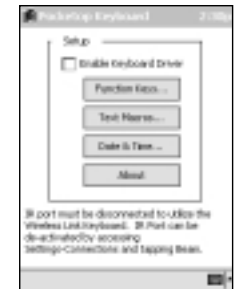


Fig. 4

Important Tip: You must disable the keyboard driver in order to ActiveSync your Pocket PC device.

Quick Set-up (screen rotation required)

A quick and easy way to type into your device is as follows:

- 1 Place your device in front of the keyboard with the IR ports facing each other (Fig. 5).
- 2 Enable the keyboard and choose the "reverse" screen rotation.

Congratulations, you are ready to start typing!



Fig. 5

Important Tips:

- You can press "Function" and apostrophe (') to rotate the screen.
- Screen rotation is not available on Sony devices, except the S series

Set-up for all Devices

Fig. 6

Setting Up the Stand

- 1 Snap out the support wire at the bottom of the Stand.
- 2 Pull out the support leg on the back of the Stand and place it on a flat surface.
- 3 Pull out the retractable reflector to the fully extended position as shown in Fig. 6 and fold the reflector over.
- 4 Place the device upright on stand.
- 5 The keyboard should be positioned approximately 4-6 inches from the base of the handheld device. As communication is by line of sight, you may need to position the device slightly left of center of the keyboard. The mirrored reflector reflects the IR Beam from the keyboard into the device's IR Port.



Congratulations, you are ready to start typing!

Important Tips:

- The position of the reflector may vary with each device. You may need to adjust the position of the stand, device and reflector slightly in order to communicate with the keyboard. Full extension is required for most models.
- The reflector is not required for devices that have their IR Ports on the side of the device. For devices of this kind, the IR port is typically along the left-hand side, allowing for direct line of sight between the IR ports.